

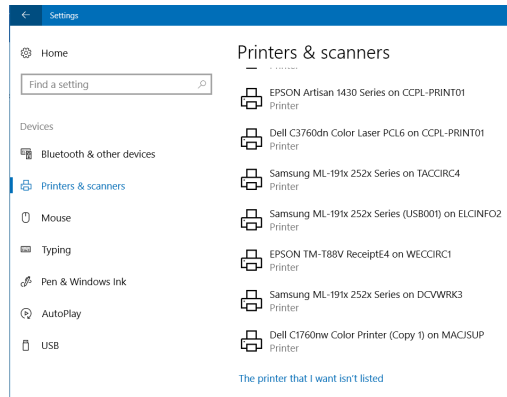
Login to SPOT.

Download the available Windows printer driver. This is not an installer, it will extract the driver files to the computer in a folder named **HP_CLJM453-M454** on the C drive.

Add the printer manually. (Windows 10)

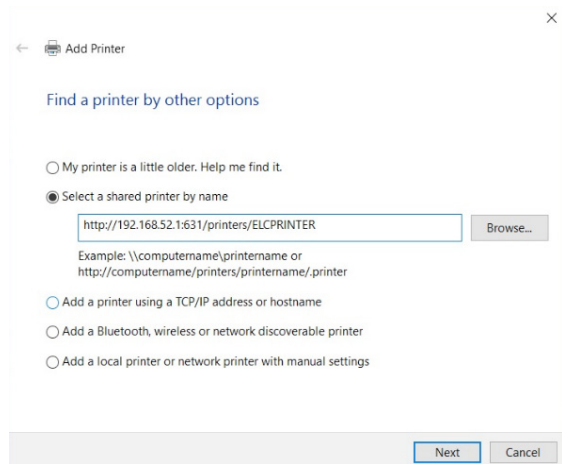
Settings -> Devices -> Printers & scanners -> Click Add printer or scanner

After a short search, click on **The printer that I want isn't listed.**

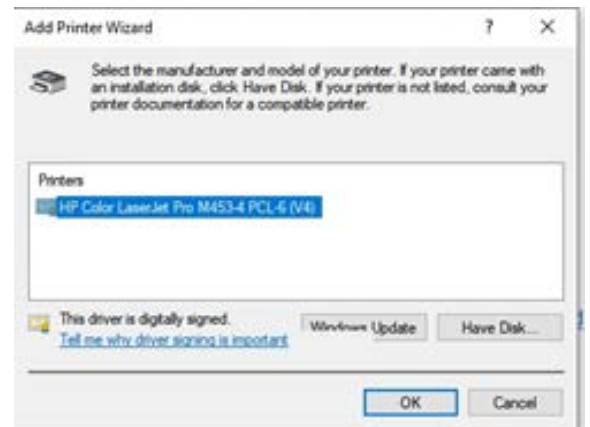
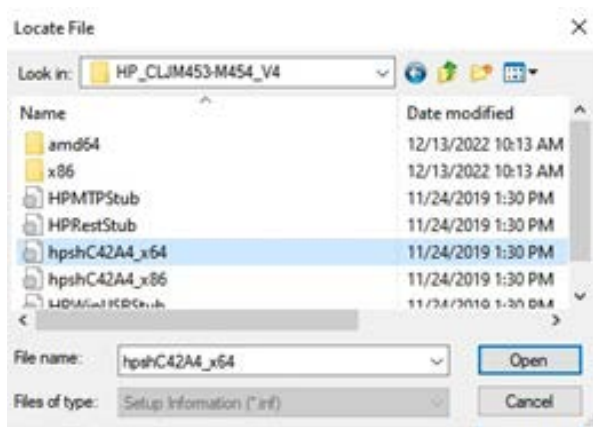


In the box that appears, choose **Select a shared printer by name** and fill in the box with the URL:

http://192.168.52.1:631/printers/ELCPRINTER (this URL can be found and copied from the SPOT page).



After clicking Next and Windows finds the printer, click on **Have Disk**. Browse to the folder **c:\HP_CLJM453-M454** and click **OK**. Select the **hpshC42A4_x64** and click **Open**.



Select the printer **HP Color LaserJet Pro M453-4 PCL-6(V4)** and click **Ok** or **Next**. The printer will install. **Note: Wi-Fi printing requires cash only. Library card balances cannot be used towards Wi-Fi printing.**

Exact change is recommended, as change cannot be given once your session ends.

